

XtremeFLEX® RKP Silicone Rubber Heating Tapes with Preset Thermostat

Product Highlights

- ✓ Plug-and-play heater with built-in pre-set temperature control
- ✓ Standard lengths up to 200 ft (61 m)
- ✓ Exceptional flexibility and durability
- ✓ For use in indoor/outdoor and wet-area locations
- ✓ Ideal for freeze protection and process control heating applications
- ✓ Rapid thermal response
- ✓ Suitable for electrically conductive surfaces
- ✓ Low profile design
- ✓ Custom sizes and designs available

**Moisture
and Chemical
Resistant**



Specifications:

- Built-In Controlling Thermostat: 70°F or 120°F (21°C or 49°C)
- Silicone Rubber Extruded Construction
- Minimum Bend Radius: 0.25 in (6 mm)
- Nominal Thickness: 0.125 in (3 mm)
- Nominal Width: 0.50 in (12.7 mm)
- Power Density: 1.0 W/in² (0.16 W/cm²)
- Nominal Voltage: Available 120 VAC or 240 VAC
- Power Cord: 60 in (1.5 m)
 - 120 VAC includes standard 2-prong plug (NEMA 1-15)
 - 240 VAC has crimped ferrule terminated leads
- Ingress Protection Rating: IP66
- Maximum Exposure Temperature: 450°F (232°C)



Ordering Information:

Width in (mm)	Length ft (m)	Total Watts	70°F (21°C) Thermostat		120°F (49°C) Thermostat	
			Part No. 120V	Part No. 240V	Part No. 120V	Part No. 240V
0.5 (13)	10 (3.0)	60	RKP1A0120	RKP2A0120	RKP1B0120	RKP2B0120
0.5 (13)	20 (6.1)	120	RKP1A0240	RKP2A0240	RKP1B0240	RKP2B0240
0.5 (13)	40 (12.2)	240	RKP1A0480	RKP2A0480	RKP1B0480	RKP2B0480
0.5 (13)	50 (15.2)	300	RKP1A0600	RKP2A0600	RKP1B0600	RKP2B0600
0.5 (13)	60 (18.3)	360	RKP1A0720	RKP2A0720	RKP1B0720	RKP2B0720
0.5 (13)	75 (22.9)	450	RKP1A0900	RKP2A0900	RKP1B0900	RKP2B0900
0.5 (13)	80 (24.4)	480	RKP1A0960	RKP2A0960	RKP1B0960	RKP2B0960
0.5 (13)	100 (30.5)	600	RKP1A1200	RKP2A1200	RKP1B1200	RKP2B1200
0.5 (13)	125 (38.1)	750	RKP1A1500	RKP2A1500	RKP1B1500	RKP2B1500
0.5 (13)	150 (45.7)	900	N/A	RKP2A1800	N/A	RKP2B1800
0.5 (13)	200 (61.0)	1200	N/A	RKP2A2400	N/A	RKP2B2400

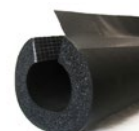
Accessories:



Fiberglass Adhesive Tape (PN: PSAT36A)
 Size: 0.5 in x 108 ft (13 mm x 38 m)
 Maximum exposure temperature: 350°F (176°C)



GFCI Adapter (PN: GFCI01)
 Converts a standard outlet into a GFCI protected outlet. For 120 VAC use, max 15A.



INSUL-LOCK® DS Foam Insulation
 Premium pre-formed foam insulation with adhesive flap. See page 14 for sizes and ordering information.

Custom Sizes and Designs Available: Contact your local distributor or BriskHeat® for more information.