



TPI  
CORPORATION  
*America's Comfort Conditioning Company*

# LED Dock Light



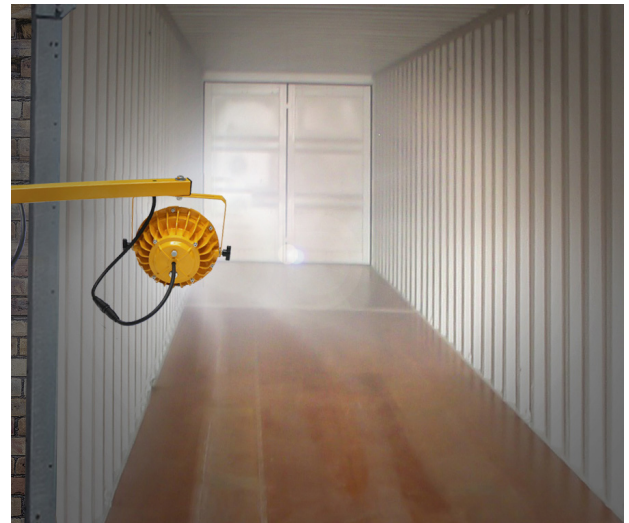
**fostoria**<sup>®</sup>  
Quality Since 1917



**fostoria**<sup>®</sup>  
Quality Since 1917

Fostoria's LED loading dock lights provide the necessary illumination to create a productive, safe, and OSHA compliant working environment. The DKLED Series offered by TPI Corporation generates a highly visible narrow beam pattern using a heavy-duty LED cast aluminum light head. This compact lighting fixture provides long lasting, high performing lumen output consuming low amounts of energy.

Engineered for illuminating trailers during the loading and unloading process in warehouse areas, the pivoting design provides a variety of operating configurations to meet your needs. Due to the light head design, the IP65 rating allows you to operate in a variety of applications and is suitable for wet locations. Thus, these units are ideal for workstations and individual areas where directional task lighting is a necessity.



Lamp Wattage:	30 Watts
Power Requirements:	120-Volt, 50/60Hz
Lamp Type:	LED (Lamp included)
Lamp Output:	3,300 Lumens

## FEATURES

- Sustainable product that only uses 10% of the energy of a standard 300 watt flood light bulb
- 3300 Lumen output at only 30-watts of energy consumption
- 12 high intensity LED emitters generating a neutral white color; with a CCT measuring 4,000K
- Custom beam angle of 20° provides optimum brightness for entire trailer length
- Die-cast aluminum light includes adjustable knobs, built-in on/off switch, and maintains an IP65 rating suitable for wet location areas.
- (2) steel arm assembly options: 40" single arm assembly (2-pc) or 42" dual arm assembly (3-pc); both offered with horizontal or vertical arm adjustment settings
- 5' long 3-prong power cord for 120-volt operations
- Safety yellow for maximum visibility
- Designed for loading dock and work station environments; plus all types of working
- Has a minimum life of 50,000 hours and offers a 5-year warranty
- Fixture provides a CE & RoHS Certificates
- ETL C/US listed for indoor & semi-protected outdoor applications



### Fully Assembled Dock Lights

TPI Model #	TPI Part #	Brand Name	Arm Reach	Arm Type	Watts	Lumens	Beam Angle	CCT	Voltage / Phase	Amps	IP Rating	Cord & Plug Type	Cord Length
DKLED-40-30W	04922802	Fostoria	40"	Single	30	3300	20°	4000K	120 / 1	0.9	IP65	18/3 NEMA 5-15	5'
DKLED-42-30W	04922902	Fostoria	42"	Dual									

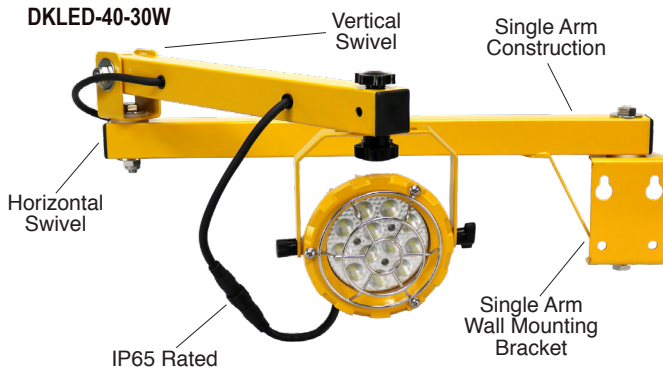
### Dock Light Heads (Only)

TPI Model #	TPI Part #	Brand Name	IP Rating	Watts	Lumens	Beam Angle	CCT	Voltage / Phase	Amps	IP Rating	Cord Type	Plug Type	Cord Length
DKLED-30W-WP	04923002	Fostoria	IP65	30	3300	20°	4000K	120 / 1	0.9	IP65	18/3	Pin Connector	18"
DKLED-30W-SP	04923102	Fostoria	N/A									NEMA 5-15	

Standards: ETL Listed US and Canada, Meets OSHA Standards, IP65 Rated, CE & RoHS Certificates

### FULLY-ASSEMBLED UNITS

Model:  
DKLED-40-30W

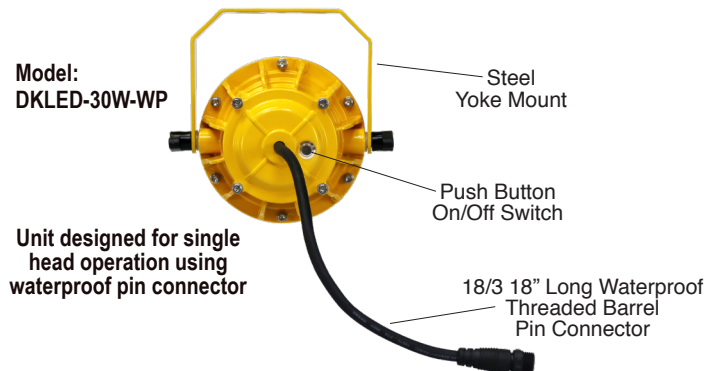


Model:  
DKLED-42-30W

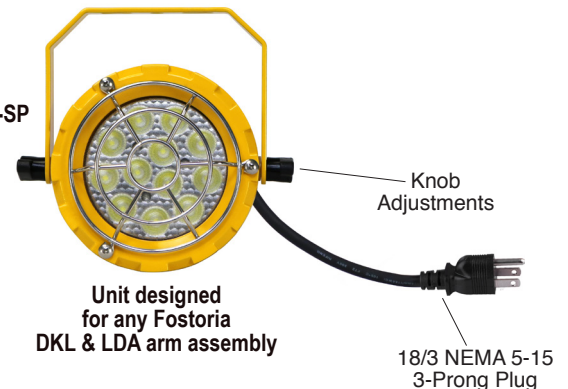


### DOCK LIGHT HEAD UNITS

Model:  
DKLED-30W-WP



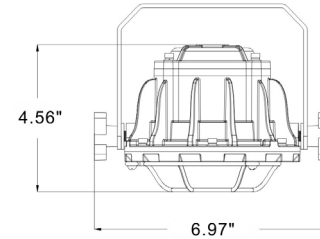
Model:  
DKLED-30W-SP



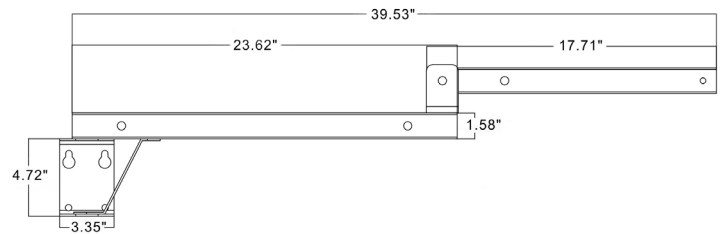
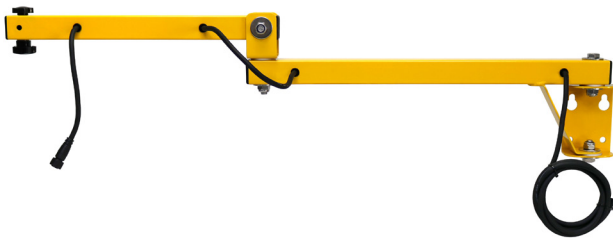
Please follow all NEC and local electrical requirements regarding input power connections.

## DIMENSIONAL DATA

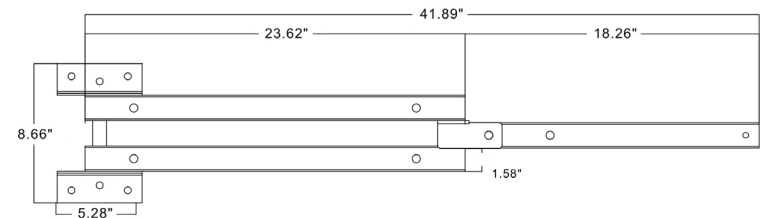
LED Light Head Fixture



40" Single Arm



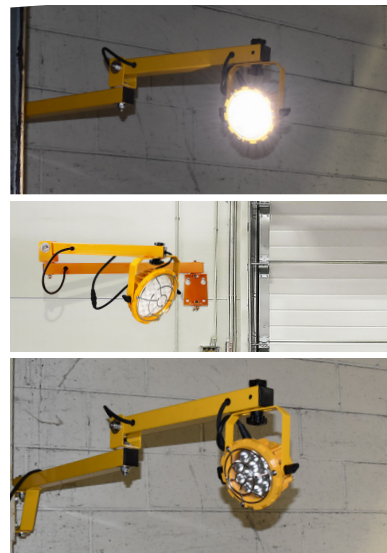
42" Dual Arm



## APPLICATION

Fostoria's LED Dock Light Series is designed and engineered for commercial and industrial environments. The units offered provide the necessary illumination to effectively concentrate a high volume of lumen output for even the longest and darkest trailers in the industry. The heavy duty cast aluminum light head is virtually indestructible, and with 50,000 hours of life expectancy is extremely reliable. The IP65 rating allows the unit to get wet, so is ideal when the shipping door is exposed to outdoor elements.

These units use low amounts of energy, and has an instant start generating full output in all types of temperature conditions. Ideal for warehousing and manufacturing areas for individual illumination and generates virtually no heat - which means it's safe "to-the-touch" during operation. The safety yellow powder-coated finish provides maximum visibility for all types of loading dock and work station areas.



Quality Since 1917