

8800 Series Institutional Wall Convactor

CABINET:

Institutional enclosure 11 Gauge perforated steel with sloped top design. Heavy duty end caps welded to the enclosure. Control compartment for housing thermostat and disconnect switch is accessible by use of security type fastener. The entire enclosure is protected by epoxy powder coated paint finish.

ELEMENT:

All steel high mass element construction with Nickel-Chromium resistance wire embedded in compacted efficient dielectric to ensure proper heat transfer. Aluminum fins mechanically bonded to steel tube allows for increased surface area and even heat transfer.

LIMIT CONTROLS:

Automatic reset hydraulic thermal overload covers full length of heating element and shuts down heater when safe operating temperatures are exceeded.

WIRING:

Wiring connections shall be made in left end of cabinet enclosure. Wiring must enter into control enclosure behind perforated steel grill.

CONTROLS:

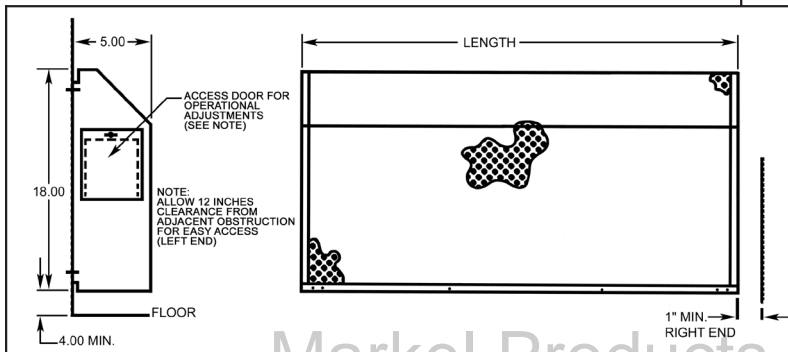
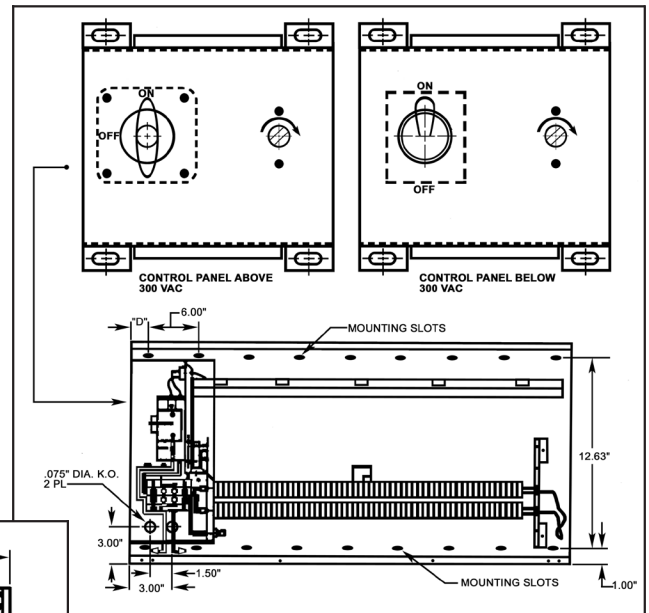
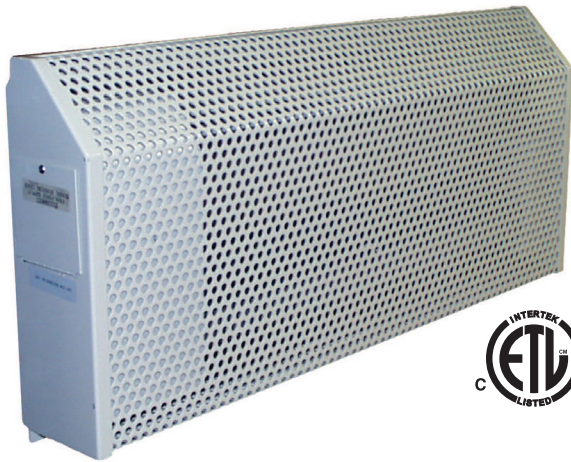
All controls are accessible only through control enclosure door. Security type fasteners restrict access to controls. Built in thermostat and disconnect switch with manual adjustment are located in control enclosure.

8800 Series Institutional Wall Convector

SUBMITTAL DATA, 8800 SERIES

AGENT	PROJECT	ENGINEER	DATE

TAG					
QTY.					
MODEL NUMBER					
VOLTS SINGLE PHASE					
LENGTH					
WATTS					
OPTIONS					
NOTES					



UNIT LENGTH	MAX WATTS
28	750
36	1000
48	1250
60	1500
72	2000