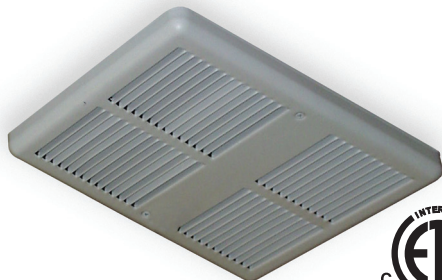


303 Series Fan Forced Multiple Wattage Electric Wall / Ceiling Heater

TYPICAL SPECIFICATION:

Furnish and install electric forced air heaters Series 303/304 where specified. The heater shall be constructed of 18 gauge steel front grill. The rough-in dimensions are 9-1/4" wide x 12-1/8" high x 3-5/8" deep. Finish shall be a durable powder coated paint. The 303 Series shall be available in white or ivory finish. The 304 shall be available in ivory only.

The heaters shall have a 1060-rpm fan motor, which drives a vane axial fan blower to deliver a quite 100 CFM airflow. The heating element shall be sealed tubular type with multiple wattage taps for field conversion from highest rated wattage to lowest rated wattage. Heaters shall have standard manual reset thermal limit safety switch. Heaters shall have fan purge limit to dissipate residual heat on heater shut down. Optional thermostat, disconnect and relays are available.



These heaters are designed for recessed or surface mount installation. These heaters may be wall mounted or ceiling mounted. Minimum clearance from heater to adjacent wall or floor is 6 inches. These heaters must be installed with wall box model number 30WB.

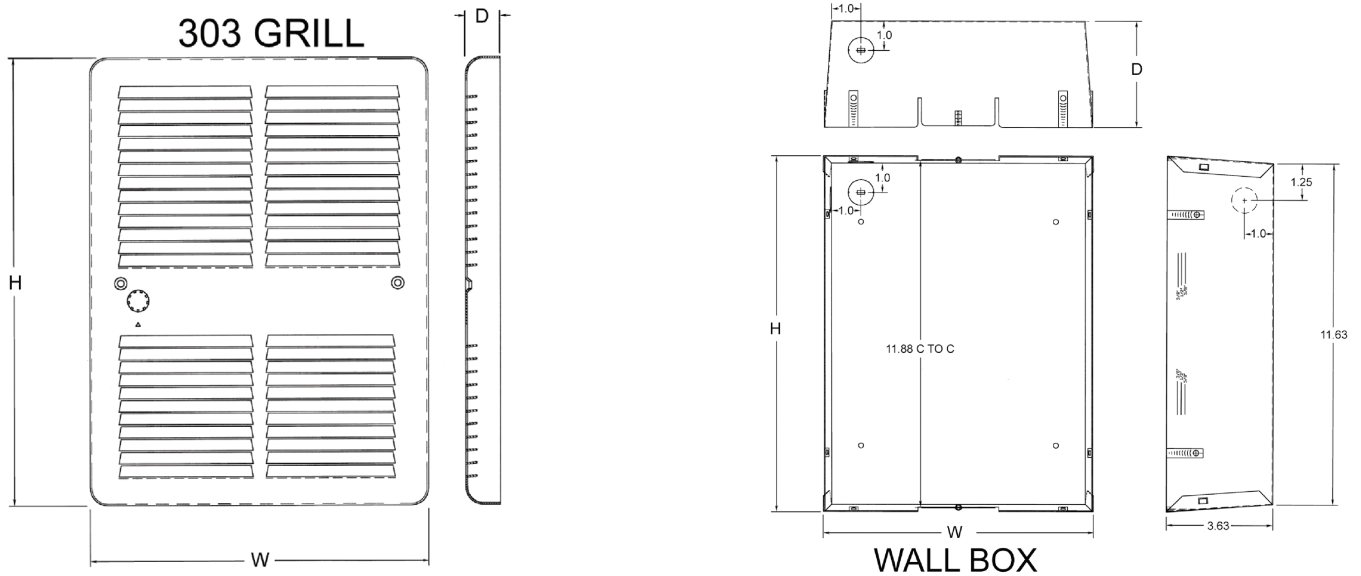
Selectable Wattages, Back Cans, And Power Disconnects

- Wattage selectable at time of installation - models shipped wired to highest Wattage
- Fan purge circuit (requires 4 wire supply when remote single pole wall thermostat is used with the unit)
- Models may not be used with remote double pole thermostat
- Drywall depth embossments on back can
- Powder coated 18 Gauge steel front
- Manual reset thermal limit
- Steel block fin element
- Propeller style fan blade - 1060 RPM / 100 CFM
- Weight 6 lbs.
- Optional field installed control voltage relays available

303 Series Fan Forced Multiple Wattage Electric Wall / Ceiling Heater

SUBMITTAL DATA, 303 SERIES

AGENT	PROJECT	ENGINEER	DATE
TAG			
QTY.			
MODEL			
WATTS			
VOLTS SINGLE PHASE			
ACCESSORIES			
NOTES			



Model & Part	Width	Height	Depth
	"W"	"H"	"D"
All Dimensions are in Inches			
Wall Box	9.190	12.130	3.625
303 Grill	9.780	12.940	1.000