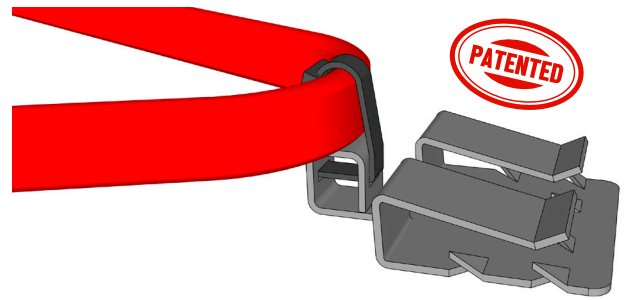


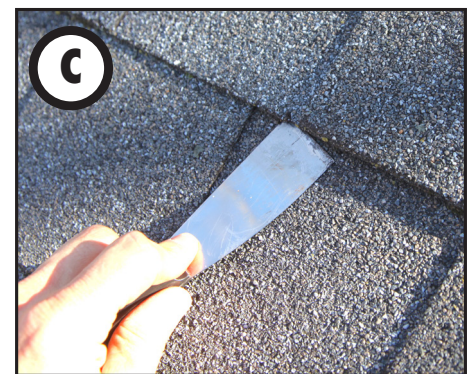
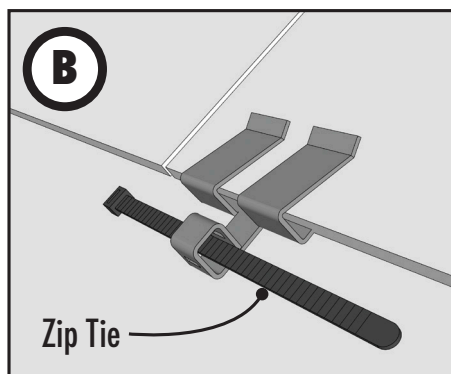
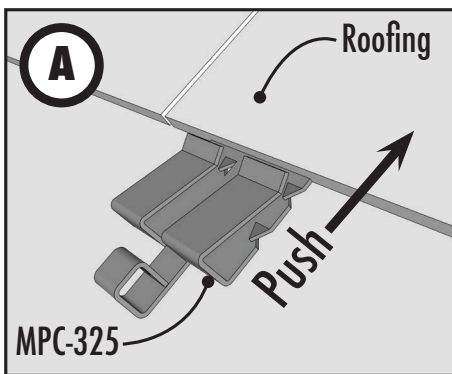
Model MPC-325 GRIP CLIP™

Nail-free solution for Installing Cable on Asphalt Shingle Roofs



MPC Clip Installation on Asphalt Shingles

The MPC-325 can be used with any type of cable from self-regulating to constant wattage to AV or telecommunications. Refer to the cable manufacturers instructions about details relating to the layout and details of the cable you are installing. In the case of heat cable, be sure to follow the manufacturers recommendations for the correct installation pattern for their cable system. We recommend installing MPC-325 clips on the double-thickness areas of the shingles when working with standard dimensional shingles.

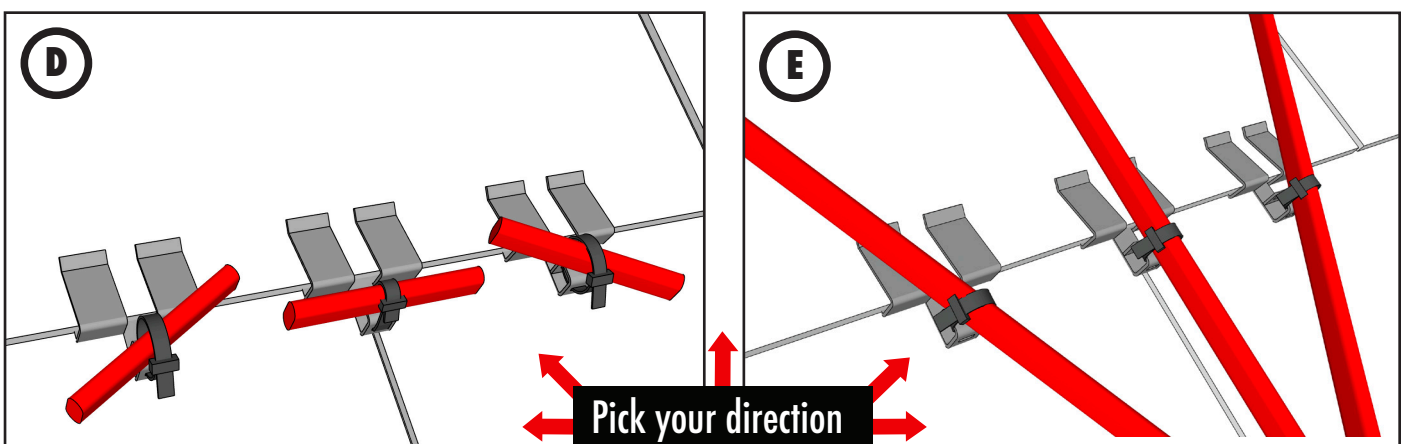


Establish your clip locations and determine the best path for your cable pattern, factoring in variables such as downspout and power source locations. Some installers use chalk to mark clip locations prior to installation to ensure proper spacing.

MPC clips can usually be installed by simply pushing the clip up onto the end of the asphalt shingle as shown in Drawings A and B, above. If the glue strip between the asphalt shingles is quite bonded, use a putty knife as shown in Photo C to break the bond where you intend to insert your MPC clips.

After each MPC clip is pushed into position and is engaged into the asphalt shingle, secure the cable in any direction, as shown in Drawings D and E below, using the provided zip ties. Do not over-tighten the zip ties.

The MPC-325 allows for two basic zip tie orientations as shown below.

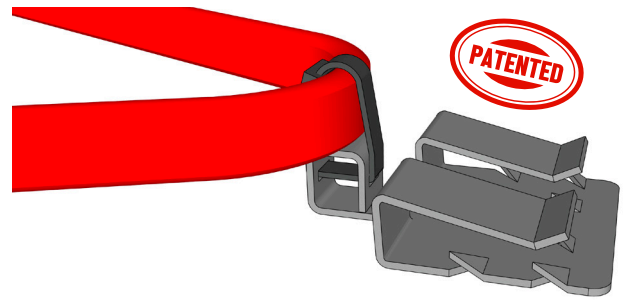


⚠ WARNING

Never attempt to pull the heating cable tight or create tension in the heat cable system from one clip to the next. This will put unnecessary stress on the roof clips and the heating cable over time. The cable should be loosely laid on the roof with just enough tension to maintain the proper serpentine pattern.

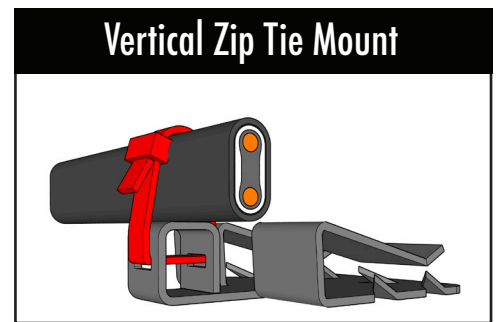
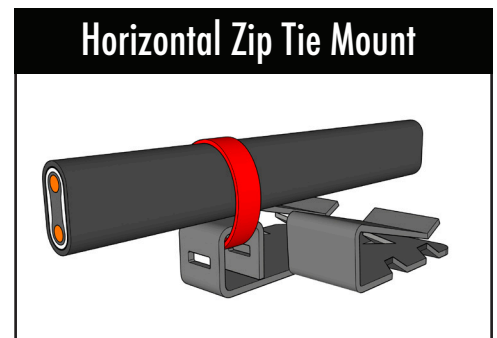
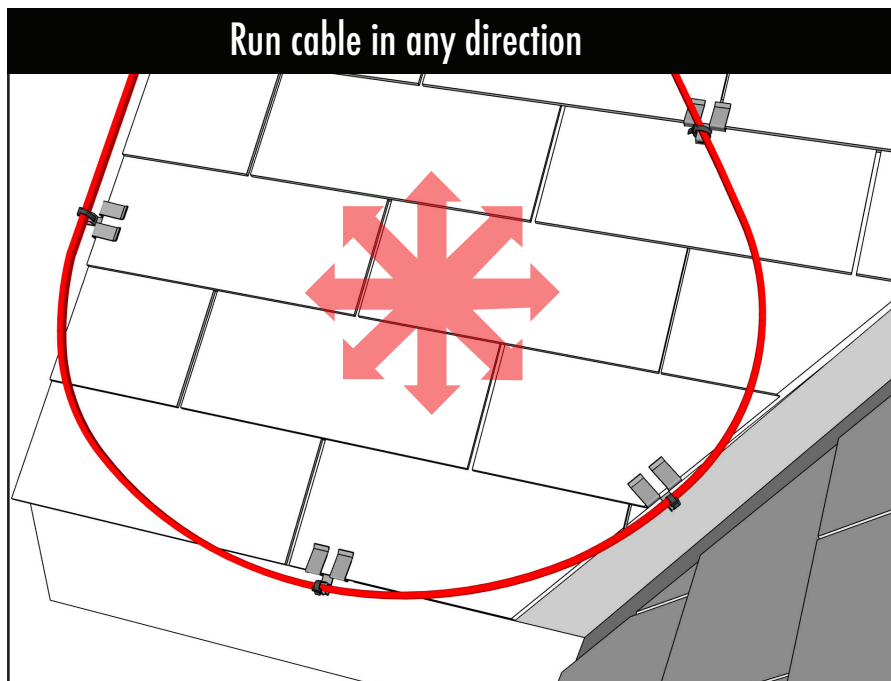
Model MPC-325 **GRIP CLIP**TM v.3-3-22

Nail-free solution for Installing Cable on Asphalt Shingle Roofs



An essential in any installers toolbox, the MPC-325 (Multi-Purpose Clip) is the preferred clip for heat cable installations on asphalt shingle roofs where total flexibility is desired. Installations require NO tools and NO nails or screws, greatly decreasing installation time while also reducing potential liability associated with using traditional nail-on clips. Additionally, the MPC-325 can be easily repositioned or removed without damaging the roofing materials by simply bending up the top arms of the clip.

The MPC-325 can be used to install both self-regulating and constant wattage heat cable on asphalt shingle roofs ranging in thickness between 1/8" - 3/8". Need to run cable vertically up the roof? Dealing with a woven shingle valley with no room for standard clips? Want to secure cable tightly to the lip of an exposed dormer flashing? The MPC-325 is a perfect clip to address the improvisational nature of heat cable installations in the field.



MPC-325 can be removed by simply prying up the upper arms until the pinching grip has been released from the shingle. The clip can then be safely slid off the shingle.

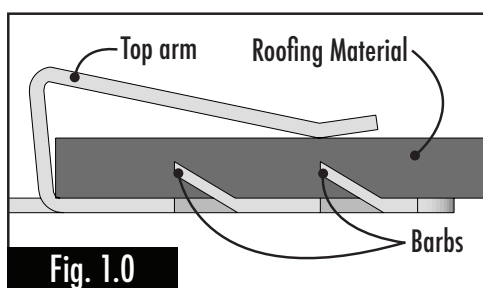


Fig. 1.0

Considerations

There are six robust aluminum barbs on the body of each MPC-325. These barbs embed, or 'bite', into the asphalt shingle creating a semi-permanent anchor that can be used for many years (Figure 1.0, Left). Installing the MPC-325 on cold roofing can minimize barb engagement. We recommend performing the installation before the roofing material becomes cold and hard. If cold weather installations are necessary, barb engagement can be promoted by quickly warming the shingle with a heat gun in the clip location. Another technique to encourage barb engagement is to slightly wiggle the MPC-325 back and forth after it has been pushed up into position. This helps the barbs to sink into the underside of the asphalt shingle.