



SUBMITTAL SHEET

Job Name: _____ Submitted By: _____ Date: _____

Location: _____

Architect: _____

Engineer: _____ Approved By: _____ Date: _____

Contractor: _____

Submitted By: _____

King Contact: _____

Quotes@king-electric.com

Date: _____

Tag	Qty	Item Number	Watts	Volts	PH	Amps	Weight

Accessories

Tag	Qty	Item Number

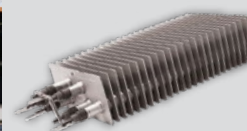
Compact Unit Heater KBP Series



Model Code:

KBP	24	06
A	B	C

A: Series
B: 12 - 120V 24 - 240V
20 - 208V 27 - 277V
48 - 480V
C: Watts (950 to 6000)


Pic-A-Watt
Steel Fin Element


- Pic-A-Watt® element
- Multiple wattage selection
- Long life cast iron motor
- Aluminum fan blade
- High accuracy built-in thermostat
- Fan delay
- Patented Smart Limit Protection®
- Selector switch—fan/heat/off
- Universal (wall/ceiling) mounting bracket
- Standard color: Onyx Gray
- 5-year limited warranty

Multiple Wattage Unit Heater

The KBP is the industry standard for multi-wattage garage / shop heaters. Designed for rugged performance, the flow-through design efficiently moves air by pulling air from the back of the heater and discharges it out the front, easily heating a large space. With high quality components suitable for both residential and commercial applications, it comes standard with a 3-position switch and an accurate built-in thermostat. The integral fan delay continues to dissipate heat from the elements during the cool down period, maximizing the heat exchange in the room. King's exclusive dual Pic-A-Watt steel fin elements allow customers to select from a range of wattage options, tailoring the heater to an area's specific heating requirements.

Ordering Information

MODEL	UPC	WATTS	BTUH (000)	PHASE	VOLTS	AMPS	CFM	TEMP. RISE	AIR THROW	MAX MOUNT HEIGHT	WT. (lbs.)
KBP1230	15191	2850-1900-950	9,727 - 3,242	1	120	23.8 - 7.9	270	34°F-11°F	12 ft.	8 ft.	26
KBP2406	15190	5700-4750-3800-2850-1900-950	19,454 - 3,242	1	240/208*	23.8 - 4	270	67°F-11°F	12 ft.	8 ft.	24
KBP2006-3MP	15193	5700-2850	19,454 - 9,727	1-3	208	15.8 - 7.9	270	67°F-34°F	12 ft.	8 ft.	26
KBP2406-3MP	15188	5700-2850	19,454 - 9,727	1-3	240/208*	13.7 - 6.9	270	67°F-34°F	12 ft.	8 ft.	25
KBP2704	15187	4000-3000-2000-1000	13,652 - 3,413	1	277	14.5 - 3.6	270	47°F-12°F	12 ft.	8 ft.	26
KBP4804-3MP	15196	4160	14,198	1-3	480***	5	270	49°F	12 ft.	8 ft.	26
KBP4806-3MP	15197	6000	20,478	1-3	480***	7.2	270	71°F	12 ft.	8 ft.	26

*Approved for 208V operation. Heater will draw 13% less Amps and 25% less wattage **3-Phase units do not have Heat / Fan / Off ** Prewired for 3-Phase, Field Convertable to 1-Phase ***480 Volt models are 24 Volt control Minimum clearance from combustibles: 18" from front, 2" from top, 6" from sides and 5" from rear. Minimum clearance 6' from floor.

Engineering Specifications

Contractor shall supply and install KBP Series unit heaters manufactured by King Electrical Mfg. Company. Heaters shall be of the wattage and voltage as indicated on the plans.

Pic-A-Watt Heating Element: Exclusive King multi-tap element allows field adjustment to several wattages at time of installation. Steel sheath elements of various resistance are copper brazed to steel plate fins producing a multi-wattage heating element.

Built-in Thermostat: Single pole factory installed hydraulic capillary tube thermostat for precision heating control. Operating range 40° to 90° F.

Fan/Heat/Off Switch: 3-position switch provides heating and summer fan only operation.

Fan Delay Switch: The fan continues to operate after the thermostat shuts off in order to remove the residual heat left in the elements. Power must not be interrupted.

CFM: 270

Universal Mounting Bracket: Combination ceiling/wall bracket is included with every heater.

Unit Bearing Motor: Permanently lubricated, long life, unit bearing 4-Pole motor with 20 cc of oil. Enclosed rotor provides long-lasting, trouble-free operation. Thermally protected. 1300 RPM.

Electrically Held Smart Limit Protection: Heater shuts off when an over temperature condition exists and automatically resets when the normal operating temperature returns.

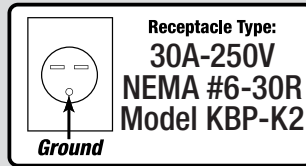
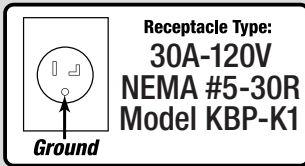
Tested: UL 2021

Approval: cCSAus

Compact Unit Heater KBP Series

Accessories

MODEL	UPC	PHASE	WEIGHT (lbs.)
KBP-K1	15198	6 ft. cord/handle kit - 120V, 1-Phase, 30 Amp (Receptacle not included. See below)	2
KBP-K2	15199	6 ft. cord/handle kit - 240V, 1-Phase, 30 Amp (Receptacle included. See below)	2



Dimensional Data

