

Installation Instructions

DS-50D Disconnect Switch for Model HD3D Unit Heaters



PF928
161-305521-003
August 2014

Warnings

Failure to understand and follow these instructions and the **“WARNING”** notes therein may result in serious personal injury from electrical shock, or from the heater falling due to faulty installation.


⚠ WARNING

ELECTRIC SHOCK HAZARD. Disconnect all power before installing or servicing heater. Failure to do so could result in personal injury or property damage. Heater must be installed by a qualified person in accordance with the National Electrical Code, NFPA 70.

⚠ WARNING

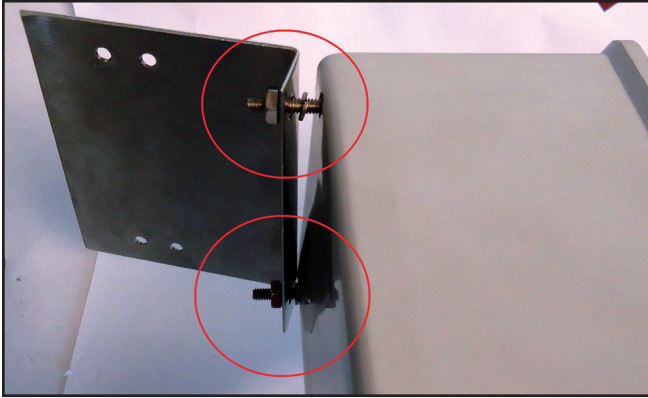
ELECTRIC SHOCK HAZARD. Any installation involving electric heaters must be performed by a qualified person and must be effectively grounded in accordance with the National Electrical Code to eliminate shock hazard.

Package Contents

| Item | Quantity | Part Number | Description | |
|------|----------|-------------|----------------------------------|---|
| A | 1 | 304873006 | Disconnect Switch Cover Assembly |  |
| B | 1 | 304873006 | Disconnect Housing Assembly |  |
| C | 1 | 058038016 | Slotted Mounting Bracket |  |
| D | 1 | 058038015 | Base Mounting Bracket |  |

| Item | Quantity | Part Number | Description | |
|------|----------|-------------|--------------------------------|---|
| E | 2 | 048849058 | 1 1/2" long 8-32 Machine Screw |  |
| F | 8 | 048849023 | 5/8" long 10-32 Machine Screw |  |
| G | 4 | 049592055 | 8-32 K-nuts |  |
| H | 2 | 049592058 | 10-32 K-nuts |  |
| I | 1 | 305629016 | Ground wire, 10 Gauge, green |  |
| J | 3 | 029205016 | Power wires, 8 Gauge, black |  |
| K | 4 | 075456007 | 1 1/4 conduit nipple |  |
| L | 4 | 075572002 | 10-32 lock washers |  |
| M | 1 | 010712053 | Gasket |  |

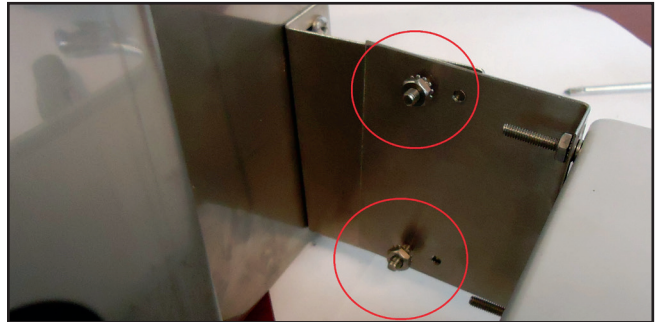
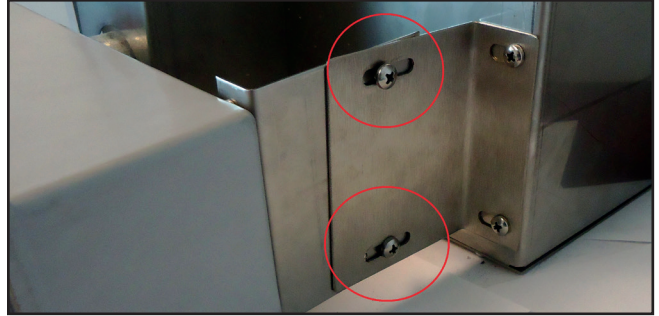
7. Place Base Mounting Bracket (Item D) on two machine screws between remaining lock-washers and 8-32 k-nuts (Item G) and fully tighten.



8. Secure Slotted Mounting Bracket (Item C) to heater frame using (2) 5/8 x 10-32 machine screws (Item F). Fully tighten.



9. Attach Slotted Mounting Bracket (Item C) to Base Mounting Bracket by inserting (2) 5/8 x 10-32 machine screws (Item F) through slots and into threaded holes. Secure using remaining 8-32 k-nuts (Item G). Fully tighten.



Note: There are 4 threaded holes on the Base Mounting Bracket to allow for assembly to be installed on different heater housing sizes. 2-20kW heaters should use threaded holes farthest from the L-bend in the bracket and 25-39kW heater should use holes closest to the L-bend.

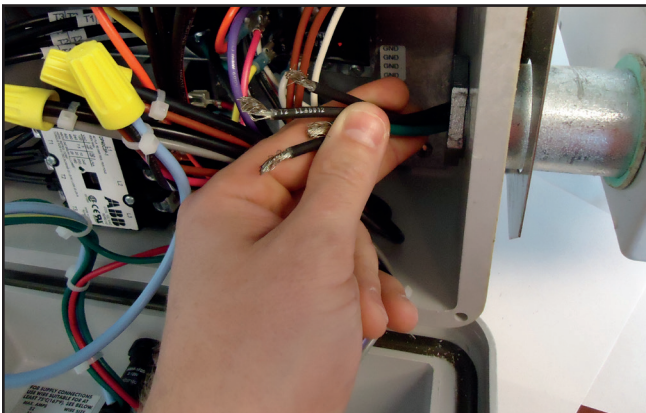
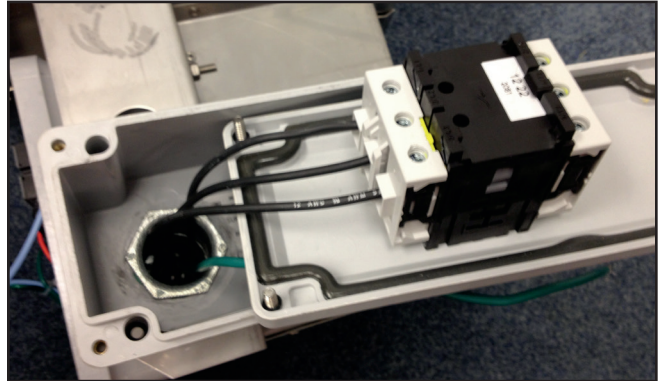
10. Fully tighten conduit nipple using 1-3/4" wrench

Disconnect Switch Wiring

11. Feed black and green jumper wires through disconnect enclosure and into control enclosure.

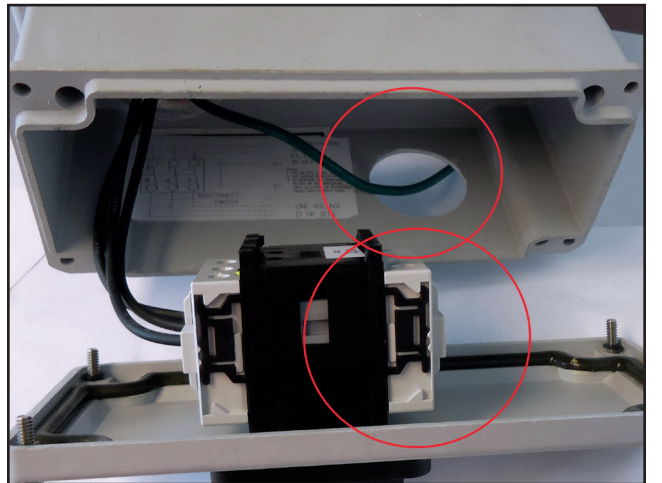
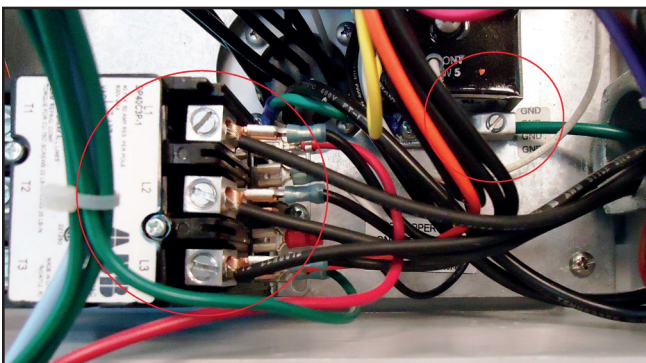


13. Install black jumper wires into disconnect terminals.



14. With disconnect installed, incoming power should be routed through disconnect enclosure conduit opening. Power wires should be installed in the remaining disconnect terminals and the ground wire should be spliced to the ground jumper wire using a wire nut.

12. Connect black jumper wires to contactor terminals and green jumper wire to ground lug.



Elements

| Part Number | Description | Item |
|--------------------|-----------------------------------|-------------|
| 010712053 | Gasket | M |
| 304873006 | TERMINAL BOX-DIS. SWITCH | A & B |
| 048849023 | 5/8 x 10-32 Machine Screws | F |
| 075572002 | 10-32 Lock Washers | L |
| 075456007 | 1 1/4 Conduit Nipple | K |
| 049592055 | 8-32 K-Nuts | G |
| 048849058 | 1 1/2 x 8-32 Machine Screws | E |
| 058038016 | Slotted Mounting Bracket | C |
| 058038015 | Base Mounting Bracket | D |
| 029205016 | 8 Gauge Black Power Jumper Wires | J |
| 305629016 | 10 Gauge Green Ground Jumper Wire | I |
| 049592058 | 10-32 K-Nuts | H |

Limited Warranty:

Please refer to the Chromalox limited warranty applicable to this product at <http://www.chromalox.com/customer-service/policies/termsofsale.aspx>.

Chromalox, Inc.
1347 Heil Quaker Boulevard
Lavergne, TN 37086
(615) 793-3900
www.chromalox.com