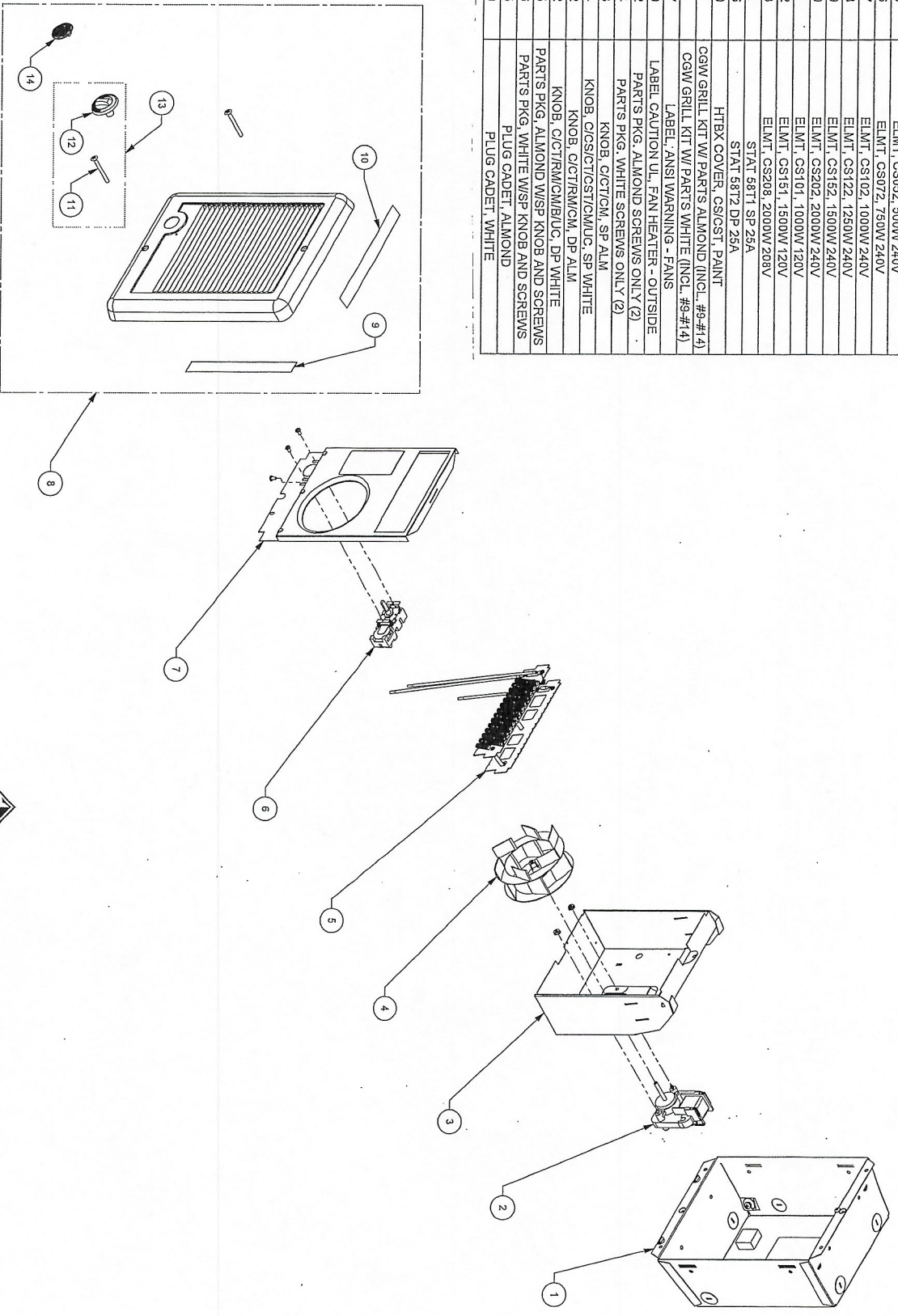


**THE COM-PAK PLUS**  
**CS SERIES ASSEMBLY EXPLODED VIEW**  
 CREATED JULY, 2011

ITEM NUMBER	PART NUMBER	DESCRIPTION
1	67051	CG / CS GMPK WALL CAN
2	051402	MOTOR, C/CS/CT/CS/T/CM, 2000W/240V, .195A
	051406	MOTOR, C/CS/CT/CS/T/CM 208V
	051421	MOTOR, C/CS/CT/CS/T/CM/GB, 240V SLOW
	051422	MOTOR, C/CS/GB, 120V, .30A
3	100520	HTBX, CS/CSST, PAINT
4	040040	BLOWER, 1 PIECE, C/CS/CT/CS/T/CM/GB, PLASTIC
5	054055	ELMT, CS052, 500W/240V
	054056	ELMT, CS072, 750W/240V
	054057	ELMT, CS102, 1000W/240V
	054058	ELMT, CS122, 1250W/240V
	054059	ELMT, CS152, 1500W/240V
	054080	ELMT, CS202, 2000W/240V
	054061	ELMT, CS101, 1000W/120V
	054062	ELMT, CS151, 1500W/120V
	054063	ELMT, CS208, 2000W/208V
6	051211	STAT 58T1 SP 25A
	051206	STAT 58T2 DP 25A
7	100120	HTBX COVER, CS/CSST, PAINT
8	67075	GGW GRILL KIT W/ PARTS ALMOND (INCL. #9-#14)
9	67079	CGW GRILL KIT W/ PARTS WHITE (INCL. #9-#14)
10	070357	LABEL, ANSI WARNING - FANS
11	070370	LABEL, CAUTION UL, FAN HEATER - OUTSIDE
12	120702	PARTS PKG, ALMOND SCREWS ONLY (2)
	120704	PARTS PKG, WHITE SCREWS ONLY (2)
	040003	KNOB, C/CT/CM, SP ALM
	040004	KNOB, C/CS/CT/CS/T/CM/UC, SP WHITE
	040032	KNOB, C/CT/CM/CM, DP ALM
	040062	KNOB, C/CT/CM/CM/BU/UC, DP WHITE
13	100705	PARTS PKG, ALMOND W/SP KNOB AND SCREWS
	100706	PARTS PKG, WHITE W/SP KNOB AND SCREWS
14	040015	PLUG CADET, ALMOND
	040010	PLUG CADET, WHITE



**CADET**<sup>®</sup>  
 Ph: 360.693.2505  
 www.cadetco.com

For verification of exact diagram for your heater contact Cadet's Technical Department.