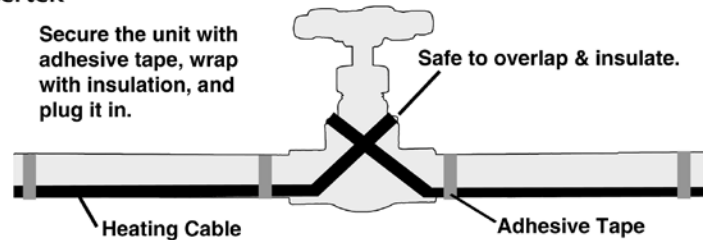


## SpeedTrace & SpeedTrace Extreme Pre-Assembled Self-Regulating Heating Cable

### Product Highlights

- ✓ Ideal for freeze protection and thawing: metal or plastic pipes and valves
- ✓ Suitable for temperatures down to: -40°F (-40°C)
- ✓ Indoor or outdoor use
- ✓ Easy-to-install: pre-assembled with power cord and plug\*
- ✓ Safe to overlap and insulate
- ✓ Automatically adjusts heat output based on surface and ambient temperature
- ✓ No temperature controller is required
- ✓ Safe for use in roof & gutter snow melting & de-icing applications



### Specifications:

- Supply voltage: 110-120VAC, 208-277VAC
- Wattage at 50°F (10°C)
  - SpeedTrace: 5 W/ft (16 W/m)
  - SpeedTrace Extreme: 8 W/ft (26 W/m)
- Maximum exposure temperature: 150°F (65°C)
- Moisture and flame resistant thermoplastic elastomer outer jacket
- 16 AWG bus wires
- 30" (76 cm) power cord with 3-prong (NEMA 5-15) plug\*

### Ordering Information:

Heating Cable Length	Part Number (120V)		Part Number (230V)	
	SpeedTrace	SpeedTrace Extreme	SpeedTrace	SpeedTrace Extreme
6 ft (1.8 m)	FFSL1-6	FFSL81-6	FFSL2-6	FFSL82-6
12 ft (3.7 m)	FFSL1-12	FFSL81-12	FFSL2-12	FFSL82-12
18 ft (5.5 m)	FFSL1-18	FFSL81-18	FFSL2-18	FFSL82-18
24 ft (7.3 m)	FFSL1-24	FFSL81-24	FFSL2-24	FFSL82-24
50 ft (15.2 m)	FFSL1-50	FFSL81-50	FFSL2-50	FFSL82-50
75 ft (22.8 m)	FFSL1-75	FFSL81-75	FFSL2-75	FFSL82-75
100 ft (30.5 m)	FFSL1-100	FFSL81-100	FFSL2-100	FFSL82-100
125 ft (38.1 m)	FFSL1-125	N/A	FFSL2-125	N/A
150 ft (45.7 m)	FFSL1-150	N/A	FFSL2-150	N/A

\* Plug not included with 208-277VAC models (bare wire leads).

### SpeedTrace Roof & Gutter Kits



Complete kit for installing roof & gutter heating.

- Kit Includes: SpeedTrace Heating Cable, Downspout Hanger Brackets, Roof Clips, UV Resistant Cable Ties, Caution Labels.
- Professional-grade heating cable for residential and commercial roofing.

See [page 13](#) for ordering information.

### Accessories:

#### Thermo-Cube Thermostatically Controlled Outlet (PN: THERMO-CUBE)



Power-saving ambient temperature sensing outlet.

- Turns on when air temperature drops below 35°F (2°C)
- Turns off when air temperature exceeds 45°F.
- Saves energy/money and extends the life of the heater.
- Suitable for indoor/outdoor use.

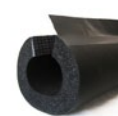
#### Fiberglass Adhesive Tape (PN: PSAT36A)



Heat resistant tape for easy installation of heating cable.

- Size: 0.5" x 108' (13mm x 38m)
- Temperature Limit: 350°F (176°C)

#### INSUL-LOCK® DS Foam Insulation



Easy insulation for residential and commercial pipe and tube.

- Easy-to-install pre-formed foam with adhesive flap.
- Moisture resistant foam is suitable for indoor/outdoor applications.
- Compatible for use with SpeedTrace and self-regulating heating cables.
- 1/2" wall thickness; R-value 3.0.

See [page 14](#) for ordering information.